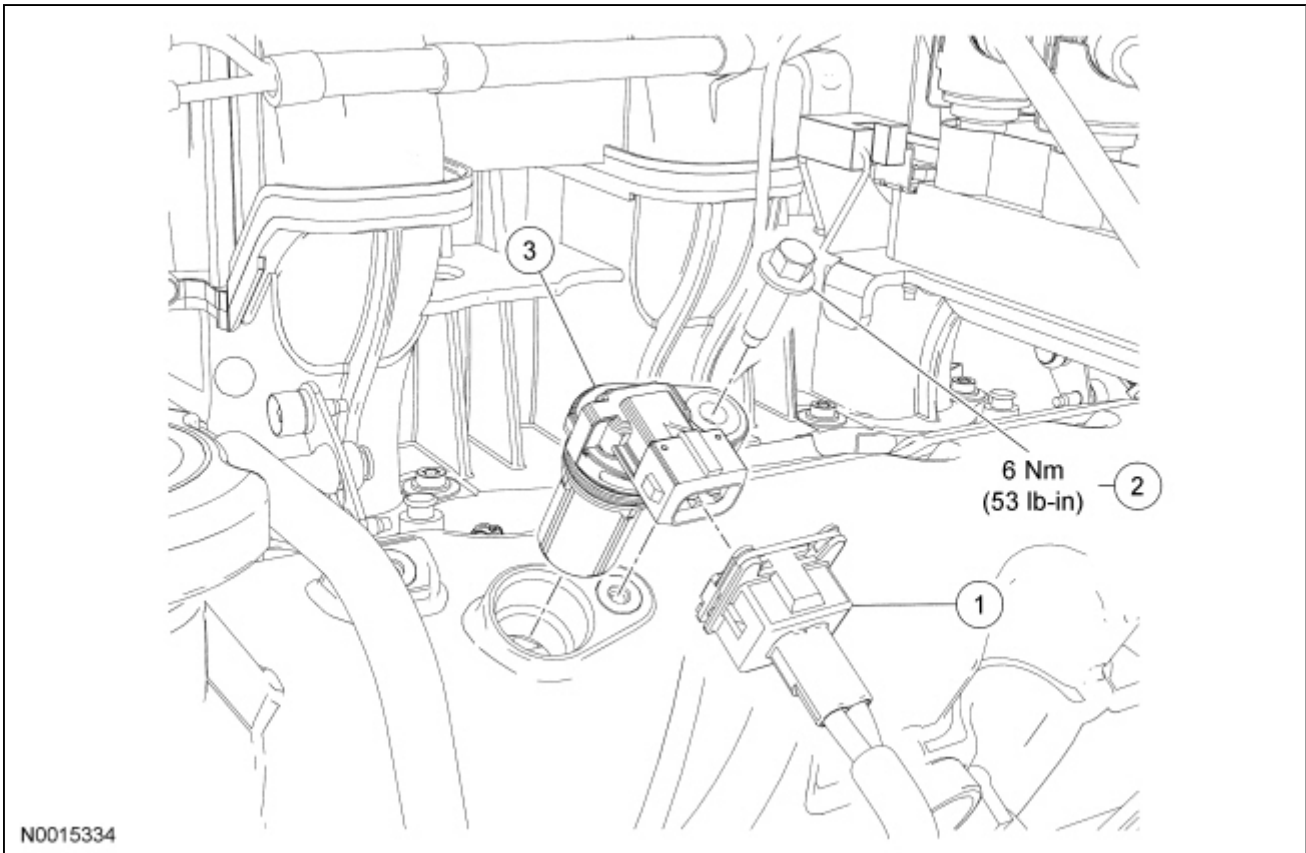


Camshaft Position (CMP) Sensor — 4.0L SOHC



Item	Part Number	Description
1	14A464	Camshaft Position (CMP) electrical connector
2	W500204	CMP sensor bolt
3	6B288	CMP sensor

Removal and Installation

1. Disconnect the Camshaft Position (CMP) sensor electrical connector.
2. Remove the bolt and the [CMP](#) sensor.
 - To install, tighten to 6 Nm (53 lb-in).
3. To install, reverse the removal procedure.

